

Tutorial and pictures by [fhornmikey@hotmail.com](mailto:fhornmikey@hotmail.com)  
Bron: <http://gamiko.com/showthread.php?p=47090#post47090>

Tools needed:

Duct Tape

Super Glue

Scissors

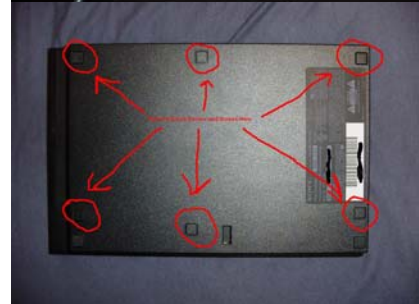
A Q-Tip (or something small to help guide the little pieces of plastic)

Tweasers (not necessary, but highly recommended in case you screw up)

Small section of plastic (anything will work here, it needs to be pretty thin, but you can just use some of the thicker plastic covering from the case of a new PS2 control/remote or some of the thin plastic from the box the super glue came in, etc.)

Your new PSTwo:

1. Flip over your PSTwo console and remove the six covers over the screws.



2. Remove the six screws from your PSTwo.



3. Carefully pry open your PSTwo on the right side (where the three holes are for the vertical stand) and be very gentle.



4. Slowly run your fingers around the outside edges of the casing along the areas where the plastic splits to separate the top section of your PSTwo from the bottom section.

5. Place the two pieces of your disassemble PSTwo on a nice flat hard surface.



**This is the internal switch (shown here with plastic already applied). This is what you'll be super glueing down with your piece of plastic.**



6. Looking at the bottom portion of your PSTwo, look just to the left of the DVD/CD rom drive, you should see a small switch sitting slightly lower than it's surroundings, this is the internal switch.

7. Cut out a small piece of the thin plastic approximately the size of the switch (it should be a tiny rectangular piece).

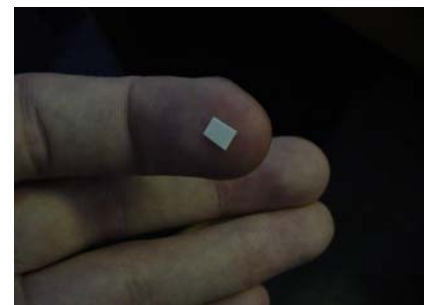
8. Place the piece of plastic on a flat surface, and take your Q-tip (which has been stripped of the fluffy cotton part) and lick the end of your cue tip to get it wet so that it has some hold.

9. Take the wet Q-Tip and pick up your small piece of plastic with it, and then carefully wet down the other side with a very small amount of super glue (a little super glue goes a LONG WAY).

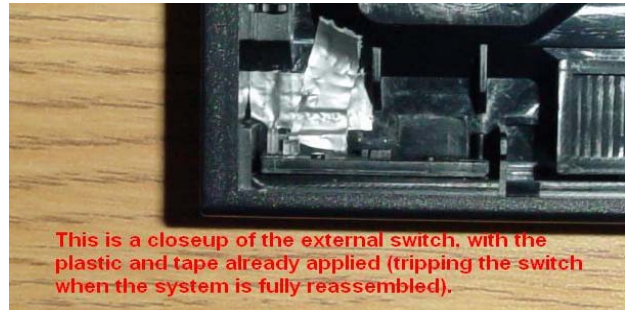
10. Quickly after you apply the super glue, carefully take your q-tip with the plastic piece, and push it down on the internal switch (you should move from the front to the back so that you push down the switch as you apply the plastic. You should then hold the q-tip there for a minute or so to help insure you get a good seal.

11. Now, while the internal switch is drying it's time to address the externally accessible switch. Take a look at the top portion of your PSTwo and look at the front lefthand corner, you should see a small rectangular hole, this is where the switch comes through to make contact with the flip top lid.

12. Cut out another small piece of plastic just slightly bigger than the first.



13. Now take a piece of duct tape that is slightly wider and a longer (more long than wide) than your piece of plastic, and place your piece of plastic square in the middle of it.



14. Carefully take your piece of duct tape, and place the piece of plastic squarely over the hole, with the duct tape around to seal the piece of plastic on there. Your externally accessible switch should now look like this from inside the disc tray:

15. (optional) if you wish to add some extra security to your covering, cut another piece of duct tape and lay it lengthwise across the original (as seen in my photos).

16. That's it, you're done, now, should you want to make your PSTwo behave like a production model PSTwo, all you have to do is remove the duct tape from the top portion of the disassembled PSTwo (the lid portion).

17. Carefully put back together your PSTwo and enjoy!

How to play games on the new PSTwo:

Games that boot with Swap Magic DVD 3.3:

1. insert swap magic DVD 3.3 into your PSTwo and close the cover.
2. turn on your PSTwo.
3. at the prompt, open up the cover and put in your PS2 DVD backup or import game and close the lid.
4. hit X and voila, enjoy your game.

Games that boot with Swap Magic CD 3.3:

1. Follow DVD instructions but replace the DVD discs with the CD discs.

The advantages of doing it this way are simple:

1. the Mod is EASY to remove (all you have to do is remove the duct tape on the inside of the flip top lid (top portion when disassembled) and put it back together, and your PSTwo will behave exactly like a unmodded production model PSTwo.
2. when swapping, you only have to switch discs and hit buttons on the controller, no messing with any of the actual internal workings of the PSTwo.